



Australian
ITALIAN SPORTSWEAR

SPORTSWEAR COLLECTION

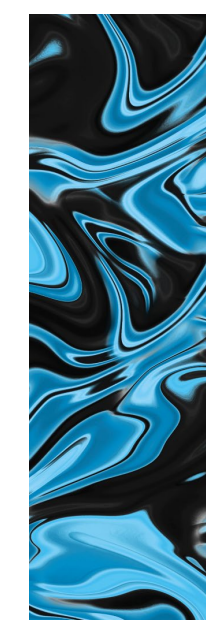
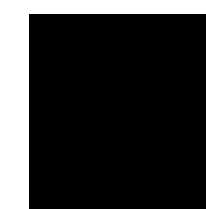
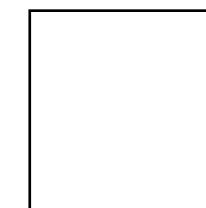
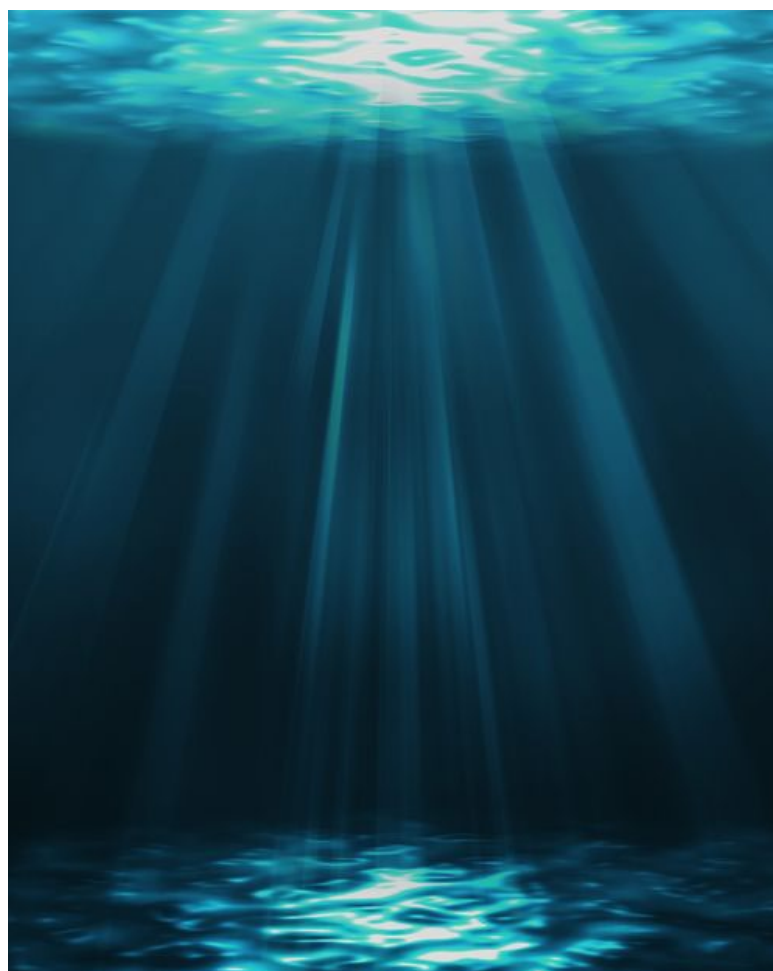
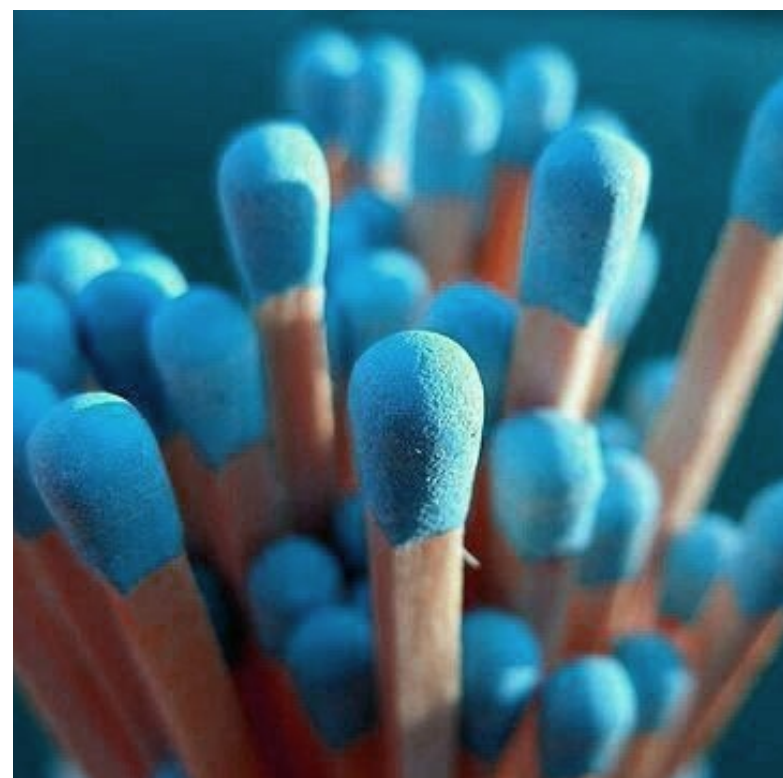
SS23 MEN

DEEP WATER

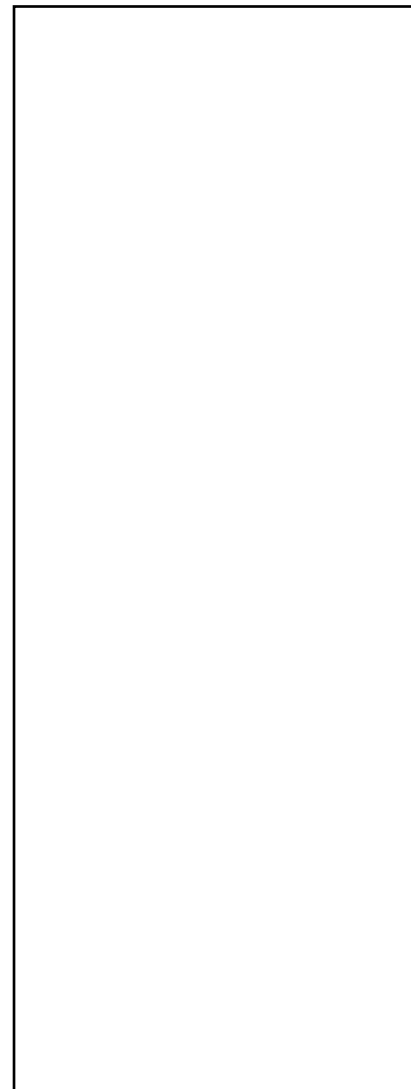
Lo stile sportivo di Australian ha portato modelli classici ad un livello superiore ed al passo coi tempi, distinguendosi per le stampe colorate a color block con big logos e ricami ben visibili su felpe, track jacket, t-shirt e pantaloni; un armonioso accostamento di colori e grafiche da sempre facenti parte del DNA del brand, il tutto arricchito da dettagli di nuova generazione e vestibilità urban.

Australian's sporty style has taken classic models to a higher level, distinguished by colorful color block prints with big logos and clearly visible embroideries on sweatshirts, track jackets, t-shirts and trousers; a harmonious combination of colors and graphics that have always been part of the brand's DNA, all enriched by new generation details and urban fit.

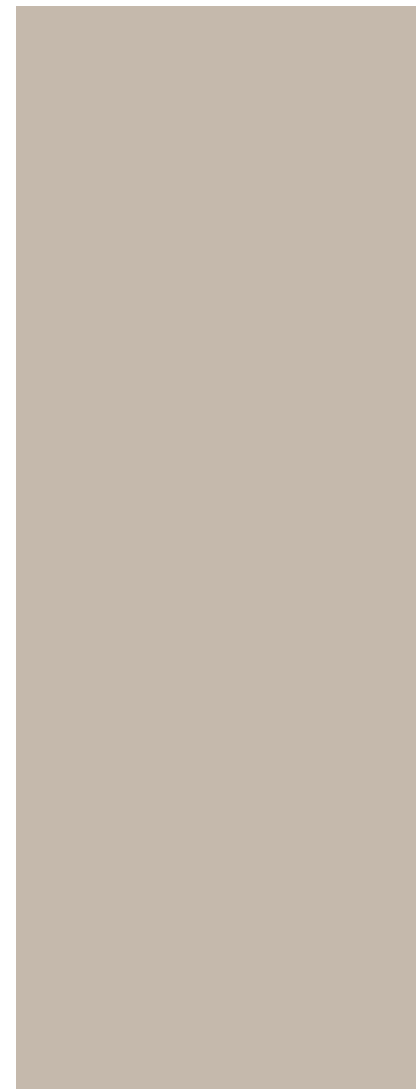
DEEP WATER: MOOD AND COLOURS



DEEP WATER: PALETTE



WHITE 002



SAND 240
PANTONE 7528C



TURQUOISE 605
PANTONE 801C



TEAL GREEN 335
PANTONE 7462C



BLACK 003



DEEP WATER ALL OVER

DEEP WATER: GROUP

HOODIE DNA
SWUFE0039
COL.605 T.030
FELPA ELAST

GIROCOLLO GEN
SWUFE0040
C.002 T.030
FELPA ELAST/SLAM

GIACCA GEN
SWUGC0044
C.335 T.030
FELPA ELAST/SLAM

GIACCA DEEP WATER
SWUGC0043
C.002 T.030
FELPA ELAST

T-SHIRT DEEP WATER
SWUTS0042
C.002 T.030
COTONE/SMASH

HOODIE DEEP WATER
SWUFE0038
C.003 T.030
FELPA ELAST

TUTA DEEP WATER
SWUTU0007
C.003 T.030
SMASH

T-SHIRT DNA
SWUTS0039
COL.002 T.030
COTONE

T-SHIRT GEN
SWUTS0044
COL.240 T.030
COT/MEMORY

PANT. URBAN
SWUPA0009
COL.003 T.030
FELPA ELAST

PANT. GEN
SWUPA0051
C.335 T.030
FELPA ELAST/SLAM

PANT DEEP WATER
SWUPA0050
C.002 T.030
FELPA ELAST

SHORT URBAN
SWUSH0015
C.335 T.030
FELPA EL

T-SHIRT URBAN
SWUTS0043
C.003 T.030
COTONE

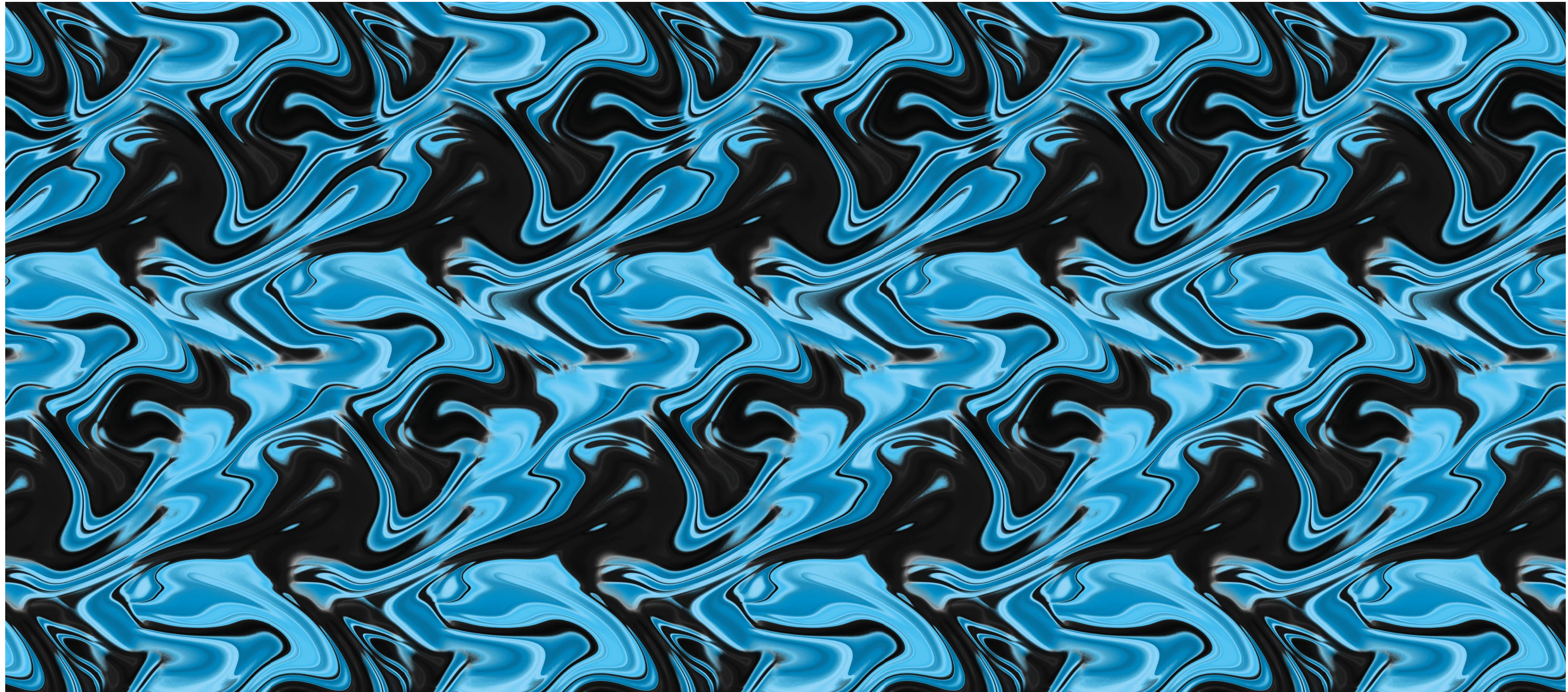
BOXER DEEP WATER
SWUCU0008
C.003 T.030
SMASH

SHORT GEN
SWUSH0016
C.003 T.030
FELPA ELAST/SLAM

DEEP WATER	RIFRA	002 WHITE	 SPORTSWEAR SPORTWEAR MEN URBAN SS23
		240 SAND	
		605 TURQUOISE	
		335 TEAL GREEN	
		003 BLACK	

SS23

DEEP WATER PRINT: ALL OVER



SS23

 **Australian**
ITALIAN SPORTSWEAR

SWUFE0039 - DNA HOODIE



Hoodie in felpa elasticizzata.
Cappuccio regolabile con coulisse.
Tasca applicata a marsupio.
Bordo e polsi in costina elasticizzata.
Logo 3-D in rilievo sul davanti.
Made in Italy

*Stretch fleece hoodie.
Adjustable hood with drawstring.
Kangaroo patch pockets.
Hem and cuffs in elasticated rib.
3D logo embossed on the front.
Made in Italy*

SS23

 **Australian**
ITALIAN SPORTSWEAR

SWUPA0009 - URBAN PANTS



Pantaloni in felpa elasticizzata.
Vestibilità slim.
Elastico in vita con coulisse regolabile.
Bordi alle caviglie in costina elasticizzata con zip invisibile all'interno.
Logo ricamato.
Made in Italy

*Stretch fleece pants.
Slim fit.
Elastic waist with adjustable drawstring.
Elastic rib borders at ankles with invisible zip inside.
Embroidery logo.
Made in Italy*

SS23

SWUTS0039 - DNA TEE



T-shirt in cotone.
Regular fit.
Collo in costina elasticizzata.
Logo 3-D in rilievo sul davanti.
Made in Italy

*Cotton T-shirt.
Regular fit.
Collar in elasticated rib.
3D logo embossed on the front.
Made in Italy*

SS23

 **Australian**
ITALIAN SPORTSWEAR

SWUFE0040 - GEN CREWNECK SWEATSHIRT



Girocollo in felpa elasticizzata.
Inserti in slam sulle maniche.
Tasca applicate a marsupio
Bordo e polsi in costina elasticizzata.
Stampa logo rifrangente sulla manica.
logo ricamato.
Made in Italy

*Stretch fleece crewneck.
Slam inserts on the sleeves.
Kangaroo patch pocket.
Hem and cuffs in elasticated rib.
Reflective logo on the sleeve.
Embroidered logo.
Made in Italy*

SS23

SWUTS0044 - GEN TEE



T-shirt in cotone.
Regular fit.
Inserto in memory sul davanti.
Collo in costina elasticizzata.
Logo rifrangente sul davanti.
Made in Italy

*Cotton T-shirt.
Regular fit.
Memory insert on the front.
Collar in elasticated rib.
Reflective logo on the front.
Made in Italy*

SS23

SWUSH0016 - GEN SHORT



Short in felpa elasticizzata.
Tasca applicata in slam con zip rovesciata in contrasto.
Elastico in vita con coulisse regolabile.
Stampa logo rifrangente.
Made in Italy

*Stretch fleece short.
Patch pocket in slam with contrasting reverse zip.
Elastic waist with adjustable drawstring.
Reflective logo.
Made in Italy*

SS23

 **Australian**
ITALIAN SPORTSWEAR

SWUGC0044 - GEN JACKET



Giacca in felpa elasticizzata.
Inseri in slam.
Cappuccio regolabile con coulisse.
Zip davanti in contrasto.
Bordo e polsi in costina elasticizzata.
Logo rifrangente sul davanti.
Made in Italy

*Stretch fleece jacket.
Slam inserts .
Adjustable hood with drawstring.
Front zip in contrast.
Hem and cuffs in elasticated rib.
Reflective logo on the front.
Made in Italy*

SS23

 **Australian**
ITALIAN SPORTSWEAR

SWUPA0051 - GEN PANTS



Pantaloni in felpa elasticizzata.
Tasca applicata in slam con zip rovesciata in contrasto.
Elastico in vita con coulisse regolabile.
Fondo con elastico alla caviglia.
Stampa logo rifrangente sulla gamba dx.
Made in Italy

*Stretch fleece pants.
Patch pocket in slam with contrasting reverse zip.
Elastic waist with adjustable drawstring.
Bottom with elastic at the ankle.
Reflective logo print on the right leg.
Made in Italy*

SS23

 **Australian**
ITALIAN SPORTSWEAR

SWUGC0043 - DEEP WATER HOODIE



Giacca in felpa elasticizzata.
Cappuccio regolabile con coulisse.
Stampa digitale.
Inseri stampati su davanti e cappuccio.
Tasca applicata a marsupio.
Bordo vita e polsi in costina.
Stampa logo rifrangente sul cappuccio.
Logo ricamato.
Made in Italy

*Stretch fleece hoodie.
Adjustable hood with drawstring.
Digital print.
Inserts printed on the front and hood.
Kangaroo patch pocket.
Ribbed waistband and cuffs.
Reflective logo print on the hood.
Embroidered Kangaroo logo.
Made in Italy*

SS23

SWUPA0050 - DEEP WATER PANTS



Pantaloni in felpa elasticizzata.
Elastico in vita con coulisse regolabile.
Costina al fondo.
Inseri stampa digitale.
Tasche laterali.
Logo rifrangente sulla gamba sinistra.
Logo ricamato.
Made in Italy

*Stretch fleece pants.
Elastic waist with adjustable drawstring.
Rib at the bottom.
Digital printing inserts.
Side pockets.
Reflective logo print on the left leg.
Embroidery logo.
Made in Italy*

SS23

SWUTS0042 - DEEP WATER TEE



T-shirt in cotone.
Regular fit.
Inserti in smash stampato sulle spalle.
Collo in costina elasticizzata.
Logo rifrangente sul dietro.
Logo ricamato.
Made in Italy

*Cotton T-shirt.
Regular fit.
Smash inserts printed on the shoulders.
Collar in elasticated rib.
Reflective logo on the back.
Embroidered logo.
Made in Italy*

SS23

SWUSH0015 - URBAN SHORT



Short in felpa elasticizzata.
Elastico in vita con coulisse regolabile.
Tasche sul davanti.
Logo olografico
Made in Italy

*Stretch fleece short.
Elastic waist with adjustable drawstring.
Pockets on the front.
Holographic logo.
Made in Italy*

SS23

 **Australian**
ITALIAN SPORTSWEAR

SWUFE0038 - DEEP WATER HOODIE



Hoodie in felpa elasticizzata.
Stampa digitale.
Cappuccio regolabile con coulisse.
Tasca applicata a marsupio.
Bordo vita e polsi in costina.
Logo ricamato.
Made in Italy

*Stretch fleece hoodie.
Digital print.
Adjustable hood with drawstring.
Kangaroo patch pocket.
Ribbed waistband and cuffs.
Embroidered Kangaroo logo.
Made in Italy*

SS23

SWUTS0043 - URBAN TEE



T-shirt in cotone.
Regular fit.
Collo in costina elasticizzata.
Logo olografico.
Made in Italy

*Cotton T-shirt.
Regular fit.
Collar in elasticated rib.
Holographic logo.
Made in Italy*

SS23

SWUCU0008 - DEEP WATER BOXER



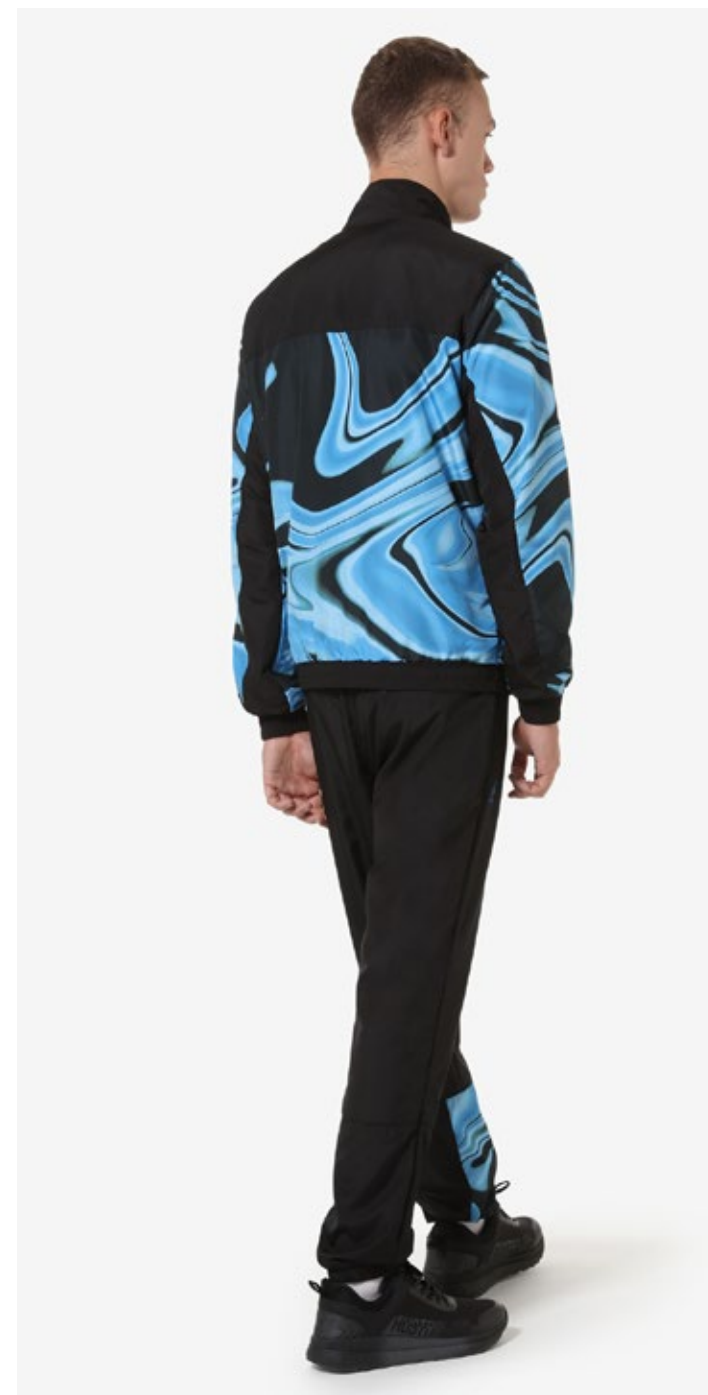
Boxer mare in tessuto “smash” super leggero.
Coulisse regolabile in vita.
Insero fettuccia nei fianchi.
Slip interno in rete.
Tasche nei fianchi.
Tasca dietro con chiusura in velcro.
Stampa sublimatica .
Logo stampato.
Made in Italy

*Super light “smash” fabric swimshort.
Adjustable drawstring at the waist.
Tape insert on the sides.
Internal mesh briefs.
Side pockets.
Back pocket with velcro closure.
Sublimation print .
Printed logo.
Made in Italy*

SS23

 **Australian**
ITALIAN SPORTSWEAR

SWUTU0007 - DEEP WATER TRACKSUIT



Tuta in "smash" foderata.
Giacca:
Fodera in rete
per una maggiore traspirabilità.
Stampa sublimatica.
Taschino sul carrè davanti.
Zip frontale e sulle tasche.
Bordo e polsi elasticizzati.
Logo ricamato.
Pantalone:
Inserito in smash stampato.
Fondo con elastico alle caviglie.
Coulisse regolabile in vita.
Logo rifrangente sulla gamba sinistra.
Logo ricamato.
Made in Italy

*Lined "smash" tracksuit.
Jacket:
Mesh lining for greater breathability.
Sublimation printing.
Pocket on the front yoke.
Front zip and pockets.
Elasticated hem and cuffs.
Embroidered logo.
Trousers:
Printed smash insert.
Bottom with elastic at the ankles.
Adjustable drawstring at the waist.
Reflective logo on the left leg.
Embroidered logo.
Made in Italy*